



Factory 13/5 Speedwell St
Somerville VIC 3912
☎ 03 5978 8755
☎ 1800 001 018
www.RoofExtenda.com.au

S600 INSTALLATION GUIDE - FOR TILE ROOF

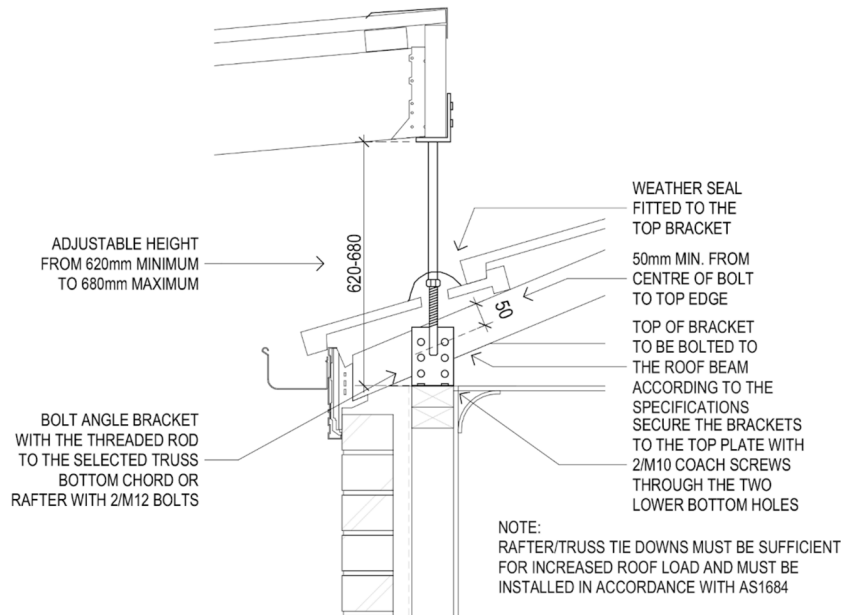
General Installation

- 1 Remove roofing tiles to achieve an opening to fit the Roof Extenda bracket.
- 2 Bolt angle bracket with the threaded rod & backing plate to the selected rafter with 4x M12 hex bolts. Secure the bracket to the top plate with 2x M10 coach screws through the two lower bottom holes.
- 3 Replace roof tiles, cutting a hole to allow the threaded rod to penetrate the roof.
- 4 Ensure you seal the centre hole in the top bracket prior to attaching pergola or carport beam, for further weather proofing.
- 5 Secure top bracket with 4x M12 hex bolts and 50mm square washers.



Care Instructions

Roof Extenda recommends painting or powder coating Mild Steel Brackets before installation for additional corrosion protection. Brackets to be cleaned and inspected yearly and re-coated if required.



S600

Adjustable height from 620mm to 680mm maximum

Note

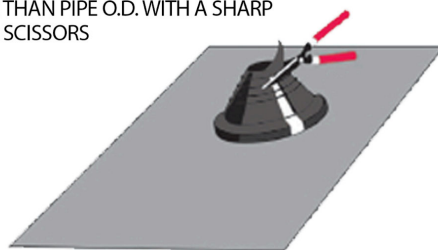
Local Council or Shire approval may be required prior to construction. Engineer's computations related to Roof Extenda products are available on the website. Roof Extenda accepts no responsibility for the type of construction undertaken. If located in a highly corrosive area, Roof Extenda recommends **316 Marine Grade Stainless Steel Brackets**.

Aqua Tile

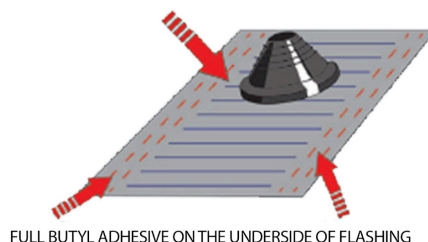
- 1 Remove roofing tiles to achieve an opening to fit the Roof Extenda Bracket.
 - 2 Bolt angle bracket with the threaded rod and backing plate to the selected rafter with 4 x M12 bolts. Secure the bracket and backing plate to the top plate with 2 x M10 coach screws through the two lower bottom holes.
 - 3 Replace roof tiles, cutting a hole to allow the threaded rod to penetrate the roof.
 - 4 Ensure tiles are cleaned before installing the Aqua Tile flashing to ensure the butyl adhesive can have maximum effect when bonded to the tiles.
 - 5 Cut the rubber cone at least 15mm smaller than the top bracket's outside diameter with a sharp knife or scissors. Ensure there are no accidental nicks in the polymer, as this will continue to split/tear over time.
- Tip: Ensure the blades are sharp with no contamination e.g. glue or any accumulated dirt.**
- 6 Halfway peel back the lining from the underside of the Aqua Tile, so that the bracket is given access to the rubber boot.
 - 7 Lubricate bracket with water and slide the Aqua Tile onto the top bracket.
 - 8 The top bracket is then wound down to the desired height and the hex nut tightened.
 - 9 Form an anti-capillary fold at the top of the base sheet.
 - 10 Remove the remaining protective backing from the underside of the Aqua Tile, that is covering the butyl adhesive.
 - 11 Hand form the base all around the tile and apply pressure to the Aqua Tile base, so that the full butyl adhesive sticks to the tiles.
 - 12 Ensure to seal the centre hole in the top bracket prior to attaching the pergola/ carport beam.
 - 13 Secure top bracket with 4x M12 hex bolts and 50mm square washers.

ENSURE TILES ARE CLEANED BEFORE INSTALLING THE AQUA TILE FLASHING TO ENSURE THE BUTYL ADHESIVE CAN HAVE MAXIMUM EFFECT WHEN BONDED TO THE TILES

CUT THE RUBBER CONE AT LEAST 15MM SMALLER THAN PIPE O.D. WITH A SHARP KNIFE OR SCISSORS

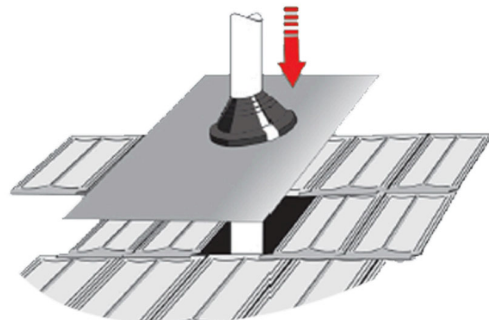


HALFWAY PEEL BACK THE LINING FROM THE UNDERSIDE OF THE AQUA TILE, SO THAT PIPE IS GIVEN ACCESS TO THE RUBBER BOOT

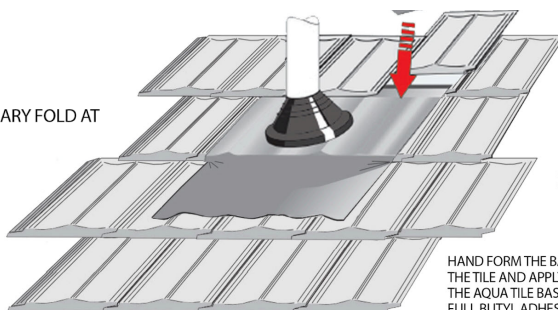


FULL BUTYL ADHESIVE ON THE UNDERSIDE OF FLASHING

LUBRICATE PIPE WITH WATER AND SLIDE THE FLASHING DOWN THE PIPE



FORM AN ANTI-CAPILLARY FOLD AT TOP OF BASE SHEET



REMOVE THE REMAINING PROTECTIVE BACKING FROM THE UNDERSIDE OF THE AQUA TILE THAT IS COVERING THE BUTYL ADHESIVE

HAND FORM THE BASE ALL AROUND THE TILE AND APPLY PRESSURE TO THE AQUA TILE BASE, SO THAT THE FULL BUTYL ADHESIVE STICKS TO THE TILES