



Factory 13/5 Speedwell St

Somerville VIC 3912

☎ 03 5978 8755

☎ 1800 001 018

www.RoofExtenda.com.au

S400 INSTALLATION GUIDE - FOR TILE ROOF

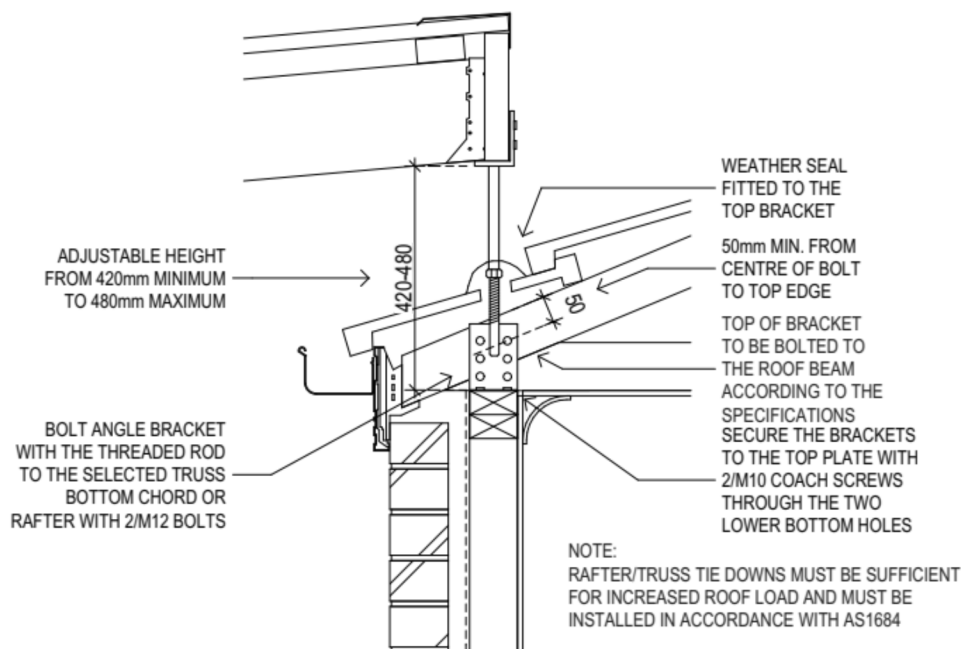
General Installation

- 1 Remove roofing tiles to achieve an opening to fit the Roof Extenda bracket.
- 2 Bolt angle bracket with the threaded rod & backing plate to the selected rafter with 4x M12 hex bolts. Secure the bracket to the top plate with 2x M10 coach screws through the two lower bottom holes.
- 3 Replace roof tiles, cutting a hole to allow the threaded rod to penetrate the roof.
- 4 Ensure you seal the centre hole in the top bracket prior to attaching pergola or carport beam, for further weather proofing.
- 5 Secure top bracket with 4x M12 hex bolts and 50mm square washers.



Care Instructions

Roof Extenda recommends painting or powder coating Mild Steel Brackets before installation for additional corrosion protection. Brackets to be cleaned and inspected yearly and re-coated if required.



S400

Adjustable height from 420mm to 480mm maximum

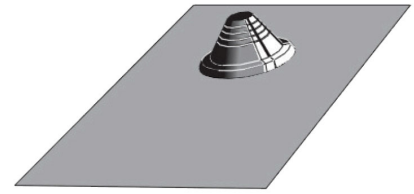
Note

Local Council or Shire approval may be required prior to construction. Engineer's computations related to Roof Extenda products are available on the website. Roof Extenda accepts no responsibility for the type of construction undertaken. If located in a highly corrosive area, Roof Extenda recommends **316 Marine Grade Stainless Steel Brackets**.

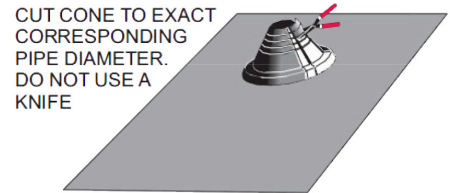
Flexatile

- 1** Remove roofing tiles to achieve an opening to fit the S Series bracket.
- 2** Bolt the angle bracket with the threaded rod and backing plate to the selected rafter with 4x M12 hex bolts and 50 mm square washers. Secure the bracket and backing plate to the top plate with 2x M10 coach screws.
- 3** Replace the roof tiles, cutting a hole to allow the threaded rod to penetrate the roof.
- 4** Ensure tiles are cleaned before installing the Flexatile flashing to ensure the butyl adhesive strips can have maximum effect when bonded to the tiles.
- 5** Cut the rubber cone at least 15mm smaller than the top bracket's outside diameter with a sharp pair of scissors. Ensure there are no accidental nicks in the polymer, as this will continue to split/tear over time.

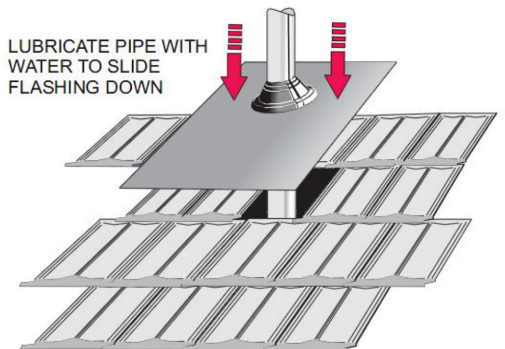
Tip: Ensure the blades are sharp with no contamination e.g. glue or any accumulated dirt.
- 6** Remove the middle lining from the underside of the flexatile, so the anchor is given access to the rubber boot.
- 7** Lubricate the top bracket with water and slide the flashing down the bracket, then wind it down to the desired height and lock the hex nut tightly.
- 8** Form an anti-capillary fold at the top of the base sheet.
- 9** Remove the protective backing from the underside of the flashing, that is covering the butyl adhesive strips.
- 10** Hand form the base all around the tile and apply pressure to the butyl adhesive side strip.
- 11** Ensure to seal the centre hole in the top bracket prior to attaching the pergola/ carport beam.
- 12** Secure top bracket with 4x M12 hex bolts and 50mm square washers.



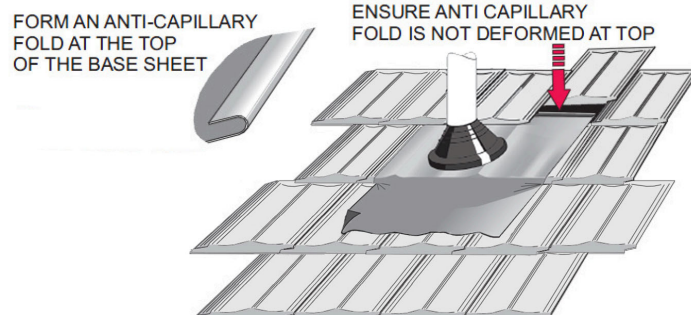
BASE SHEET CHOICE
a) ACRYFLASH
b) ALUMINIUM
c) RE-INFORCED POLYMER



CUT CONE TO EXACT
CORRESPONDING
PIPE DIAMETER.
DO NOT USE A
KNIFE



LUBRICATE PIPE WITH
WATER TO SLIDE
FLASHING DOWN



FORM AN ANTI-CAPILLARY
FOLD AT THE TOP
OF THE BASE SHEET

ENSURE ANTI CAPILLARY
FOLD IS NOT DEFORMED AT TOP