



Factory 13/5 Speedwell St

Somerville VIC 3912

☎ 03 5978 8755

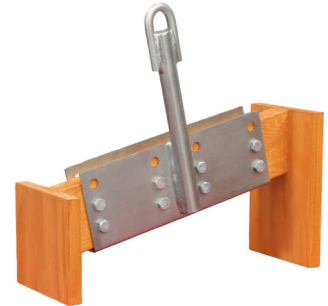
☎ 1800 001 018

[www.RoofExtenda.com.au](http://www.RoofExtenda.com.au)

## ROOF SAFETY ANCHOR INSTALLATION GUIDE FOR TILE ROOF

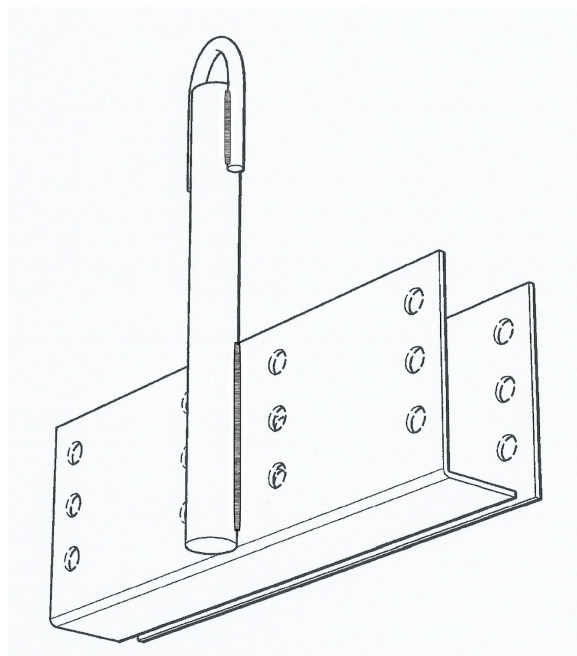
### General Installation

- 1 Lift roof sheet to achieve an opening to fit the Roof Extenda Roof Safety Anchor.
- 2 Bolt angle section and flat plate sandwiching the selected rafter at approx. 300mm from the roof's ridge with a minimum of 8x M12 Hex Bolts and Nuts.
- 3 Replace the roof sheet, cutting a hole to allow the loop to penetrate the roof.



### Care Instructions

Roof Extenda recommends painting or powder coating the Roof Safety Anchor prior to installation for additional corrosive protection. The Roof Safety Anchor is to be cleaned and inspected yearly and re-coated if required.



### Note

Local Council or Shire approval may be required prior to construction. Roof Extenda accepts no responsibility for the type of construction undertaken. The Roof Safety Anchor has a 15Kn single person/limited freefall. Ensure the rafter/truss is capable of sustaining the rated loads, and all fittings are of a quality suitable to sustain the rated loads. Verification by a suitably qualified engineer may be required.

## Aqua Tile

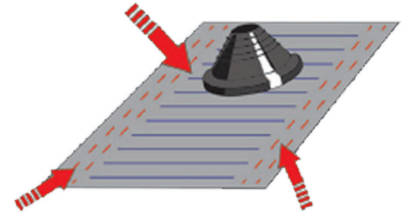
- 1** Remove roofing tiles to achieve an opening to fit the Roof Safety Anchor.
  - 2** Bolt angle section and flat plate sandwiching the selected rafter at approx. 300mm from the roof's ridge with a minimum of 8x M12 hex bolts and washers.
  - 3** Replace roof tiles, cutting a hole to allow the loop to penetrate the roof.
  - 4** Ensure tiles are cleaned before installing the Aqua Tile flashing to ensure the butyl adhesive can have maximum effect when bonded to the tiles.
  - 5** Cut the rubber cone at least 15mm smaller than the anchor's outside diameter with a sharp knife or scissors. Ensure there are no accidental nicks in the polymer, as this will continue to split/tear over time.
- Tip: Ensure the blades are sharp with no contamination e.g. glue or any accumulated dirt.**
- 6** Halfway peel back the lining from the underside of the Aqua Tile, so that the anchor is given access to the rubber boot.
  - 7** Lubricate anchor with water and slide the Aqua Tile down the anchor.
  - 8** Form an anti-capillary fold at the top of the base sheet.
  - 9** Remove the remaining protective backing from the underside of the Aqua Tile, that is covering the butyl adhesive.
  - 10** Hand form the base all around the tile and apply pressure to the Aqua Tile base, so that the full butyl adhesive sticks to the tiles.

ENSURE TILES ARE CLEANED BEFORE INSTALLING THE AQUA TILE FLASHING TO ENSURE THE BUTYL ADHESIVE CAN HAVE MAXIMUM EFFECT WHEN BONDED TO THE TILES

CUT THE RUBBER CONE AT LEAST 15MM SMALLER THAN PIPE O.D. WITH A SHARP KNIFE OR SCISSORS

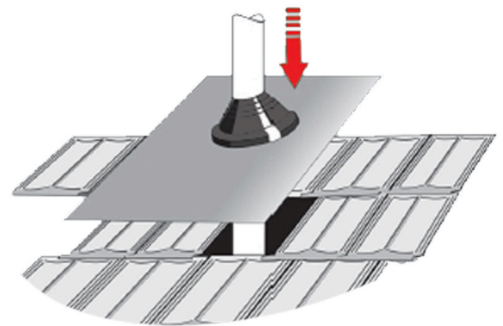


HALFWAY PEEL BACK THE LINING FROM THE UNDERSIDE OF THE AQUA TILE, SO THAT PIPE IS GIVEN ACCESS TO THE RUBBER BOOT

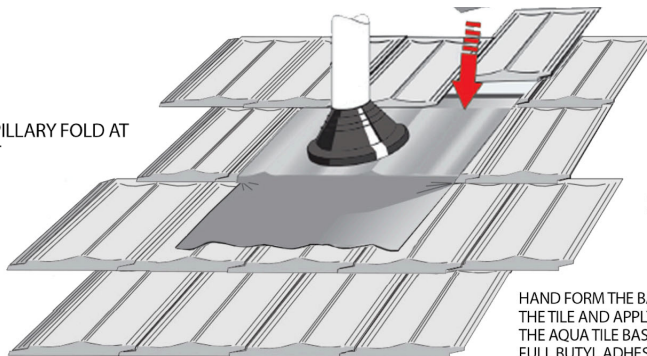


FULL BUTYL ADHESIVE ON THE UNDERSIDE OF FLASHING

LUBRICATE PIPE WITH WATER AND SLIDE THE FLASHING DOWN THE PIPE



FORM AN ANTI-CAPILLARY FOLD AT TOP OF BASE SHEET



REMOVE THE REMAINING PROTECTIVE BACKING FROM THE UNDERSIDE OF THE AQUA TILE THAT IS COVERING THE BUTYL ADHESIVE

HAND FORM THE BASE ALL AROUND THE TILE AND APPLY PRESSURE TO THE AQUA TILE BASE, SO THAT THE FULL BUTYL ADHESIVE STICKS TO THE TILES