



Factory 13/5 Speedwell St

Somerville VIC 3912

☎ 03 5978 8755

☎ 1800 001 018

www.RoofExtenda.com.au

MKII INSTALLATION GUIDE - FOR TIN ROOF

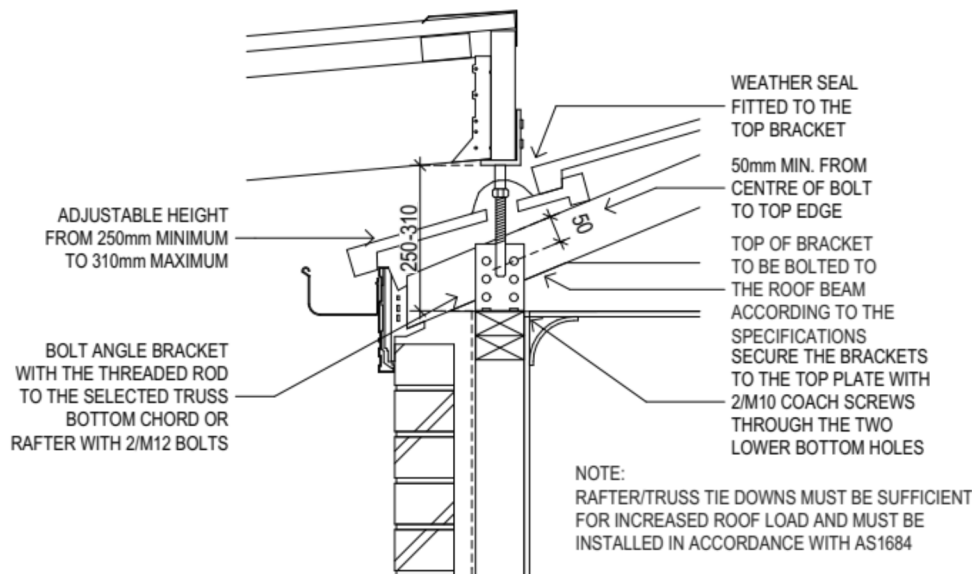
General Installation

- 1 Lift r of sheet to achieve an opening to fit the Roof Extenda bracket.
- 2 Bolt angle bracket with the threaded rod to the selected rafter with 4x M12 hex bolts and 50mm square washers. Secure the bracket to the top plate with 2x M10 coach screws through the two lower bottom holes.
- 3 Replace roof sheet, cutting a hole to allow the threaded rod to penetrate the roof.
- 4 Ensure you seal the centre hole in the top bracket prior to attaching pergola or carport beam, for further weather proofing.
- 5 Secure top bracket with 4x M12 hex bolts and 50mm square washers.



Care Instructions

Roof Extenda recommends painting or powder coating Mild Steel Brackets before installation for additional corrosion protection. Brackets to be cleaned and inspected yearly and re-coated if required.



MKII

Adjustable height from 250mm to 310mm maximum

Note

Local Council or Shire approval may be required prior to construction. Engineer's computations related to Roof Extenda products are available on the website. Roof Extenda accepts no responsibility for the type of construction undertaken. If located in a highly corrosive area, Roof Extenda recommends **316 Marine Grade Stainless Steel Brackets**.

FlashRite Weather Seal

- 1 Lift roof sheet to achieve an opening to fit the bracket.
- 2 Bolt the angle bracket with the threaded rod to the selected rafter with 4x M12 hex bolts and 50 mm square washers. Secure the bracket to the top plate with 2x M10 coach screws.

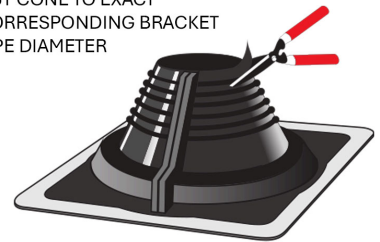
- 3 Replace the roof sheet, cutting a hole to allow the threaded rod to penetrate the roof.

- 4 Cut cone to the exact corresponding bracket outside diameter. We recommend a sharp pair of scissors to cut our pipe flashing for the correct pipe size. Ensure there are no accidental nicks in the polymer, as this will continue to split/tear over time.

Tip: Ensure the blades are sharp with no contamination e.g. glue or any accumulated dirt.

- 5 Lubricate the top bracket with water prior to attaching the weather seal.
- 6 Attach the weather seal to the top bracket then wind it down to the desired height and lock the hex nut tightly.
- 7 Form the weather seal to the profile of the roof and mark out the position of the weather seal.
- 8 Slide the weather seal up the bracket to apply neutral cure sealant inside the area marked, press the weather seal into position and finish with a bead of sealant to the edges of the weather seal to complete the fitting.
- 9 Realign weather seal onto roof and fix with Class 3 or Class 4 hex head self-drilling screws minimum of 16mm long with a rubber washer.
- 10 Ensure to seal the centre hole in the top bracket prior to attaching the pergola/ carport beam.
- 11 Secure top bracket with 4x M12 hex bolts and 50mm square washers.

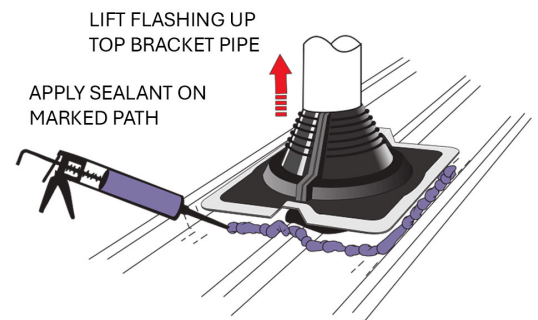
CUT CONE TO EXACT
CORRESPONDING BRACKET
PIPE DIAMETER



WHEN SLIDING FLASHING
DOWN TOP BRACKET PIPE
WITH WATER

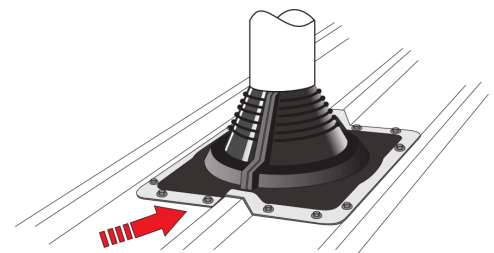
FORM TO
ROOF PROFILE

MARK OUT
SEALANT PATHS



LIFT FLASHING UP
TOP BRACKET PIPE

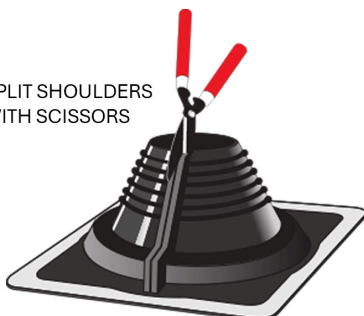
APPLY SEALANT ON
MARKED PATH



REALIGN FLASHING ONTO ROOF AND FIX
WITH APPROPRIATE FASTENERS. START HERE.

If Retro-Fitting a Weather Seal:

SPLIT SHOULDERS
WITH SCISSORS



CRIMP FLASHING
SHOULDERS WITH
RETROFIT CLIPS.
FACE JOINT DOWNSTREAM.

