



ABN 39 073 621 208

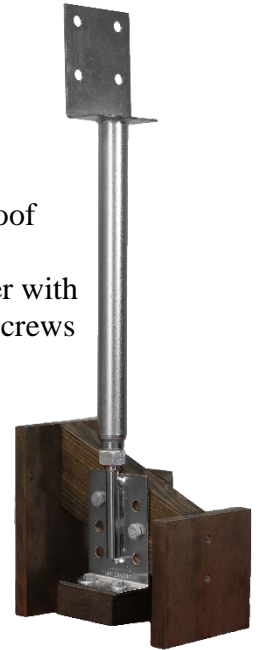
Factory 13 5 Speedwell Street Somerville Vic 3912
Phone (03) 5978 8755

Email : info@roofextenda.com.au
Website : www.roofextenda.com.au

S500 INSTALLATION GUIDE

General Installation

1. Remove Roofing tiles or lift roof sheets to achieve an opening to fit the Roof Extenda brackets.
2. Bolt angle bracket to the threaded rod & backing plate to the selected rafter with 2 or 4 x M12 bolts. Secure the bracket to the top plate with 2-M10 coach screws through the two lower bottom holes.
3. Replace roof tiles or roof sheet, cutting a hole to allow the threaded rod to penetrate the roof.
4. The weather Seal is fitted to the top bracket, top bracket is then wound down to the desired height and the lock nut tightened. Mark the position of the Weather Seal on the roofing. Slide the Weather Seal up to apply clear neutral cure silicone to the area marked, press & shape the Weather Seal into the roof profile and finish with a bead of silicone to the edges of the Weather Seal to complete the fitting.



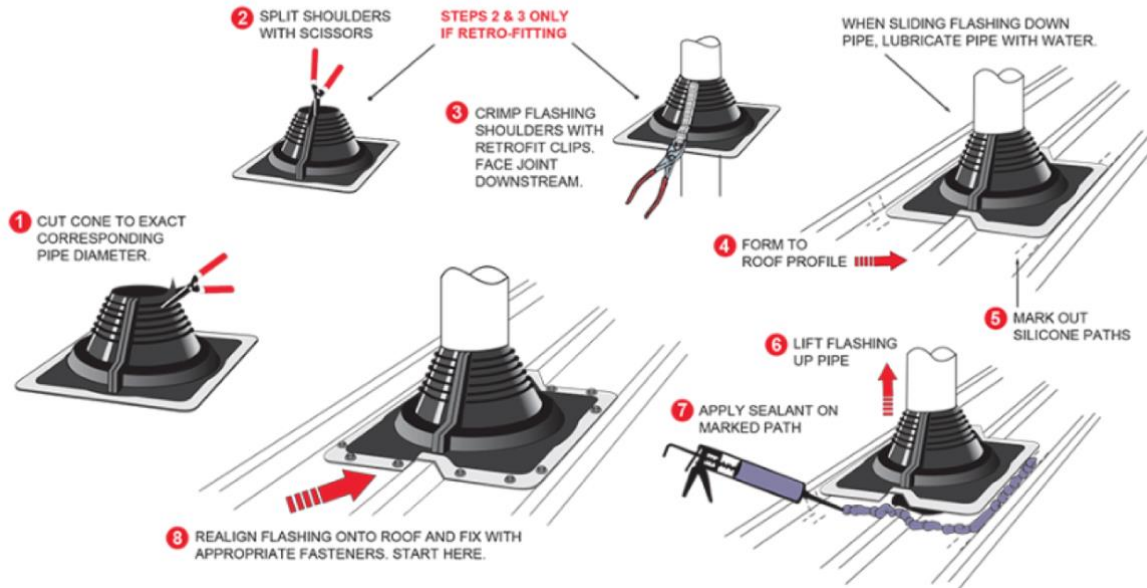
FlashRite Weather Seal

If using a FlashRite weather seal it is fitted to the top bracket, top bracket is then wound down to the desired height and the lock nut tightened. Mark the position of the FlashRite weather seal on the roofing. Slide the FlashRite weather seal up to apply clear neutral cure silicone inside the area marked, press the FlashRite weather seal into position and finish with a bead of silicone to the edges of the FlashRite weather seal to complete the fitting.

Flexatile

If using a flexatile, remove the middle lining from the underside of the flexatile. Cut the rubber cone at least 15mm smaller than the bracket OD with a sharp knife or scissors. Ensure tiles are cleaned before installation. Lubricate the bracket with water and slide the flashing down the bracket. Form an anti-capillary fold at top of base sheet. Remove the protective backing from the underside of the flashing, that is covering the butyl adhesive strips. Hand form the base all around the tile and apply pressure to the butyl adhesive side strip.

Installation Overview



Installation Overview

